

# Bowel Cancer Screening



# True or false?

- **Bowel Cancer is the 4<sup>th</sup> most common cancer in the UK?**
- **True**
- **Nearly 43,000 people are diagnosed with bowel cancer every year in the UK.**
- **Around 268,000 people living in the UK today have been diagnosed with bowel cancer**

# True or false?

- **There is no cure for bowel cancer?**
- **False**
- **Bowel cancer is treatable and curable especially if diagnosed early. Nearly everyone survives bowel cancer if diagnosed at the earliest stage. However this drops significantly as the disease develops. Early diagnosis really does save lives**
- **Bowel cancer UK, 2022 (Accessed: 06/03/2023)**

# True or false?

- **Bowel cancer screening can prevent bowel cancer occurring?**
- **True**
- **Bowel cancer screening reduces your risk of dying from bowel cancer by at least 25% and allows us to remove any polyps found during colonoscopy, which reduces your risk of developing bowel cancer.**
- **.gov, 2022 accessed: 06/03/2023**

# True or false?

- I only need to take part in bowel cancer screening if I have bowel symptoms

- False

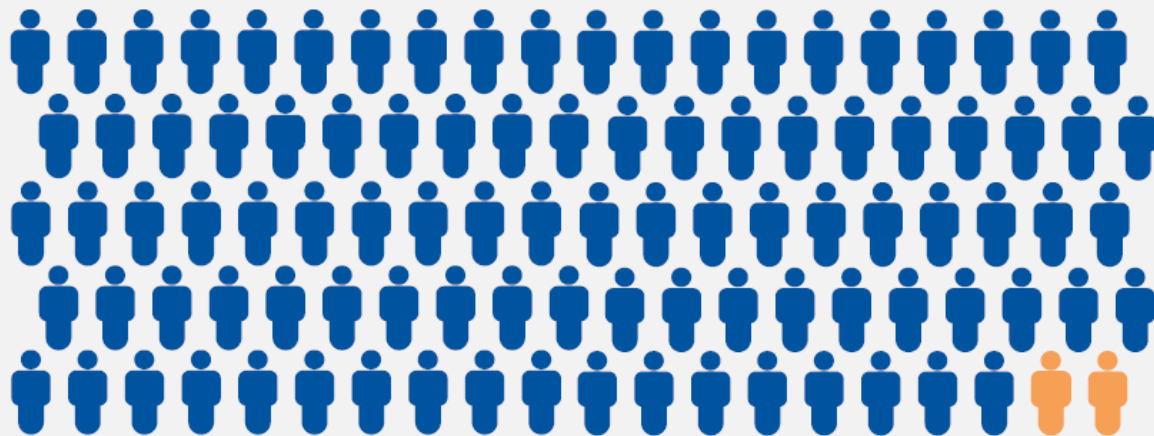
## Symptoms of bowel cancer include:

- blood in your poo (faeces)
- looser poo, pooing more often and/or constipation
- a pain or lump in your abdomen (tummy)
- feeling more tired than usual for some time
- losing weight for no obvious reason

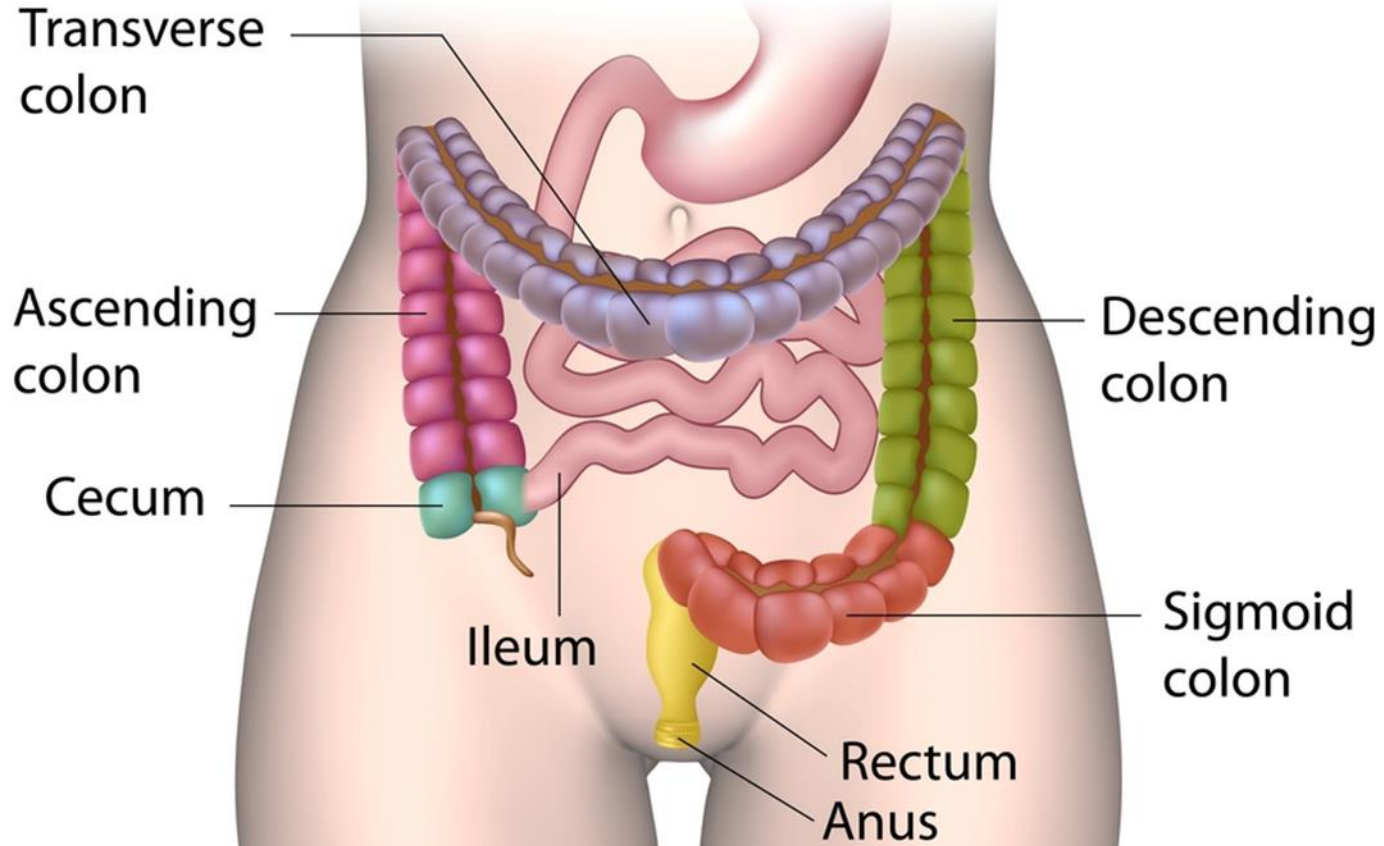
# **What is bowel cancer screening?**

<https://www.youtube.com/watch?v=Hb7euOEXEsc>

98 do not need  
further tests



2 will need  
further tests





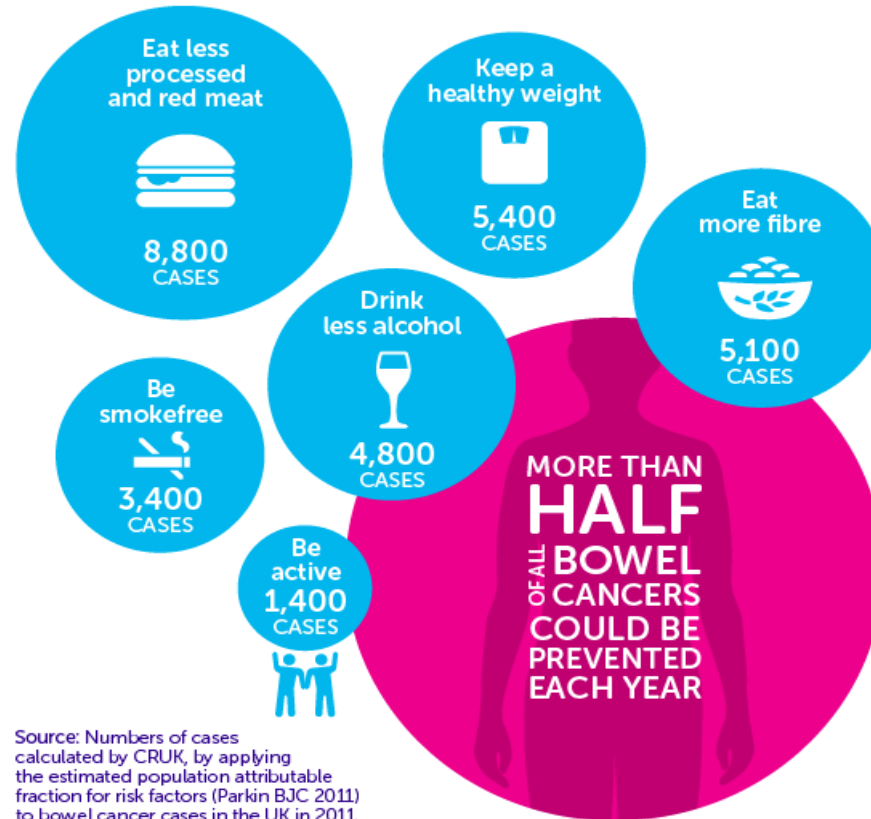
# Having a Colonoscopy

<https://youtu.be/yhMfqZDY8Ass>

# How can you help reduce your risk of Bowel cancer?

## SIX WAYS TO REDUCE YOUR RISK OF BOWEL CANCER...

...AND THE NUMBER OF UK CASES THAT COULD BE PREVENTED



Source: Numbers of cases calculated by CRUK, by applying the estimated population attributable fraction for risk factors (Parkin BJC 2011) to bowel cancer cases in the UK in 2011.

LET'S BEAT CANCER SOONER.  
cruk.org

